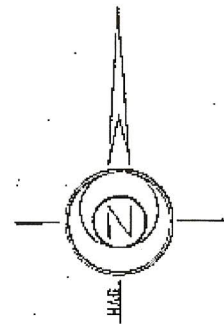
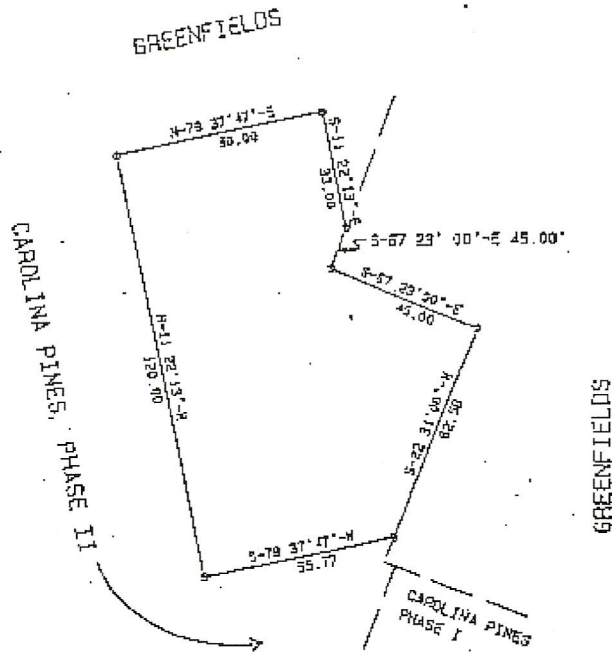


NOTE THIS LAND IS NOT IN A FLOOD ZONE.



RE: MAP BY ROBERT L. BELLAMY & ASSOCIATES DATED MARCH 28, 1978 FOR GREENFIELD CONDOMINIUMS.

"I hereby certify that the ratio of precision of the field survey is 1:7500 as shown hereon and the area was determined by the DMD method of area calculation."

Terry H. Watson
 Terry H. Watson, R.L.S. 1512-C 4th. Avenue
 Land Surveying, Inc. Conway, S.C. 29526



LOCATION MAP
 11A. - 201.

CAROLINA PINES, TENNIS COURT AREA	
KINGSTON ENGINEERING ASSOCIATES	
1512-C FOURTH AVENUE CONWAY, SOUTH CAROLINA 29526	
MAP OF 0.187 ACRE OF LAND IN CONWAY TOWNSHIP, Horry COUNTY, S. C.	
SCALE 1" = 40'	JOB NO.
DATE 10/16/1984	Sheet 2 of 2 Sheets

MAY 1984

BELLAMY, RUTENBERG, COPELAND,
EPPS, GRAVELY & BOWERS, P. A.

ATTORNEYS AT LAW
1000 80TH AVENUE NORTH
P. O. BOX 487
MYRTLE BEACH, SOUTH CAROLINA 29578

AREA CODE 803
448-8400

HOWELL V. BELLAMY, JR.
JOHN K. RUTENBERG
JOHN L. COPELAND
CLAUDE H. EPPS, JR.
DAVID R. GRAVELY
EDWARD B. BOWERS, JR.
BRADLEY D. KING
BENNETTA U. GOLDING
R. MICHAEL MUNDEN
JUDITH J. HONEYCUTT
H. EDWIN HINDS, JR.
JILL F. GAFFNEY
MART L. SOWELL

July 9, 1986

Ms. Crystal S. Kroll
Vice President
First Carolina Properties, Inc.
1203 - 48th Avenue North
Myrtle Beach, SC 29577

RE: Amendment to By Laws For Greenfields at College
Park Homeowner's Association, Inc.

Dear Crys:

Please find enclosed herewith a copy of the Amendment to
the By Laws for Greenfields at College Park Homeowner's
Association, Inc., which has been clocked in by the Clerk
of Court's Office. At such time as we have received the
original back from the Clerk of Court, we will forward it
on to you.

If you should have any questions, please do not hesitate
to call me.

Yours truly,

BELLAMY, RUTENBERG, COPELAND,
EPPS, GRAVELY, & BOWERS, P.A.

Edwin

M. Edwin Hinds, Jr.

MEHjr:pcm
Enclosure

